

DB 300/2



Class 2

DB300/2 가

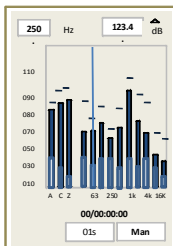
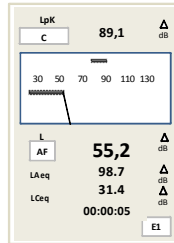
가 DB300/2

DB300/2
PC

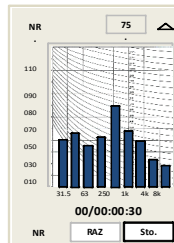
LDB23



- 가 : Lxy
- 가 : Lxeq
- : Lupk
- : Lxe



- 31.5Hz to 8kHz



- NR

-
-
-
- 1/1
- NR 가
-
-

I/O

가

- DC : 0-10V : 0 - 137dB

L01-L10-L50-L90-L95

DB300/1

LDB23



TECHNICAL FEATURES

CE : NF EN 61672-1 (2002) - NF EN 60651 (1979) - NF EN 60804 (2000) - CEI 61260
 : EN 61010 - EN61000

: Class 2 - NF EN 61672-1 : LXy - LXymax - LXymin - LXeq,T - LXeq,DI - LXE
 : , 1/2", , 20mv/Pa - LXeq,DI,max - LXeq,DI,min
 : Lp/Leq : 107dB, Lpk : 54dB : LXy LXeq
 Lp Leq/Lpk : 30-137dBA :
 35-137dBC(Z) / 83-137dBC(Z)
 X 가 : A, C, Z
 : 31.5Hz // 8kHz
 Y 가 : F(fast), S(slow), I(impulse), U : Peak
 Short Leq(DI) : 1/16s, 1/8s, 1/4s, 1/2s,
 1s to 60s (1s step)

....., 3-5-10m 가
 240 x 160 , 16 LCD,
 , 3D
8 x
 , , 0.01%
 SD (2GB)
-10 ~ 50
0 ~ 90%RH
 (L x l x e).....270 x 70 x 40mm
355g
 가 1/4"

....., NR , S1 + S2
Lp-Leq :
Leq-St : (1/16e s ~ 60s)
 :
 - Base Leq 1s : 1 ~ 99 , 135
 - Base Leq 1/16s : 1 ~ 99 , 8
 I/ODC : 0-10V / 0-137dB
 : TTL level 3.3V
 , 20 24 가
2

- , 3 x AA ,
- USB
- USB
- LDB200

- : 3-5-10m
- class1
- (NF EN 60942:2003) type : CAL300
- I/O



Acoustic calibrator

www.kimo.fr

Distributed by :



EXPORT DEPARTMENT
 Tel : + 33. 1. 60. 06. 69. 25 - Fax : + 33. 1. 60. 06. 69. 29
 e-mail : export@kimo.fr

F1ang - DB300_1 - 13/02/12 - RCS (24) Périgueux 349 282 095 Non-contractual document - We reserve the right to modify the characteristics of our products without prior notice.